

TAXING UNIT : 58

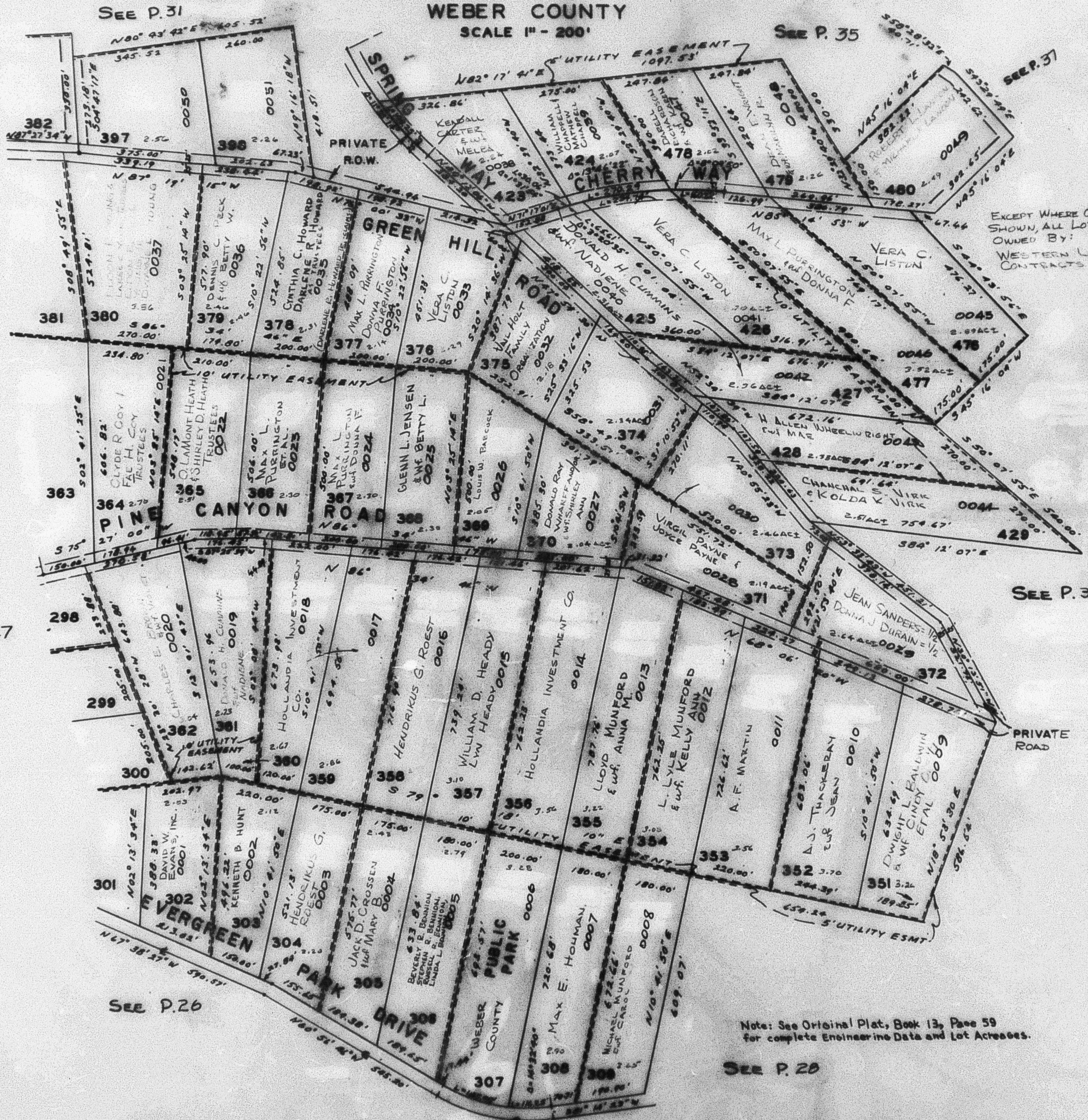
# EVERGREEN PARK SUBDIVISION NO.1

PREFIX : 23-033

LOTS 302 - 309, 351 - 362, 364 - 380, 397 - 398, 423 - 429, 476 - 480

WEBER COUNTY

SCALE 1" = 200'



EXCEPT WHERE OTHERWISE SHOWN, ALL LOTS ARE OWNED BY: WESTERN LAND CONTRACTS CO. CD.

Note: See Original Plat, Book 13, Page 59 for complete Engineering Data and Lot Acres.

SEE P. 27

SEE P. 26

SEE P. 28